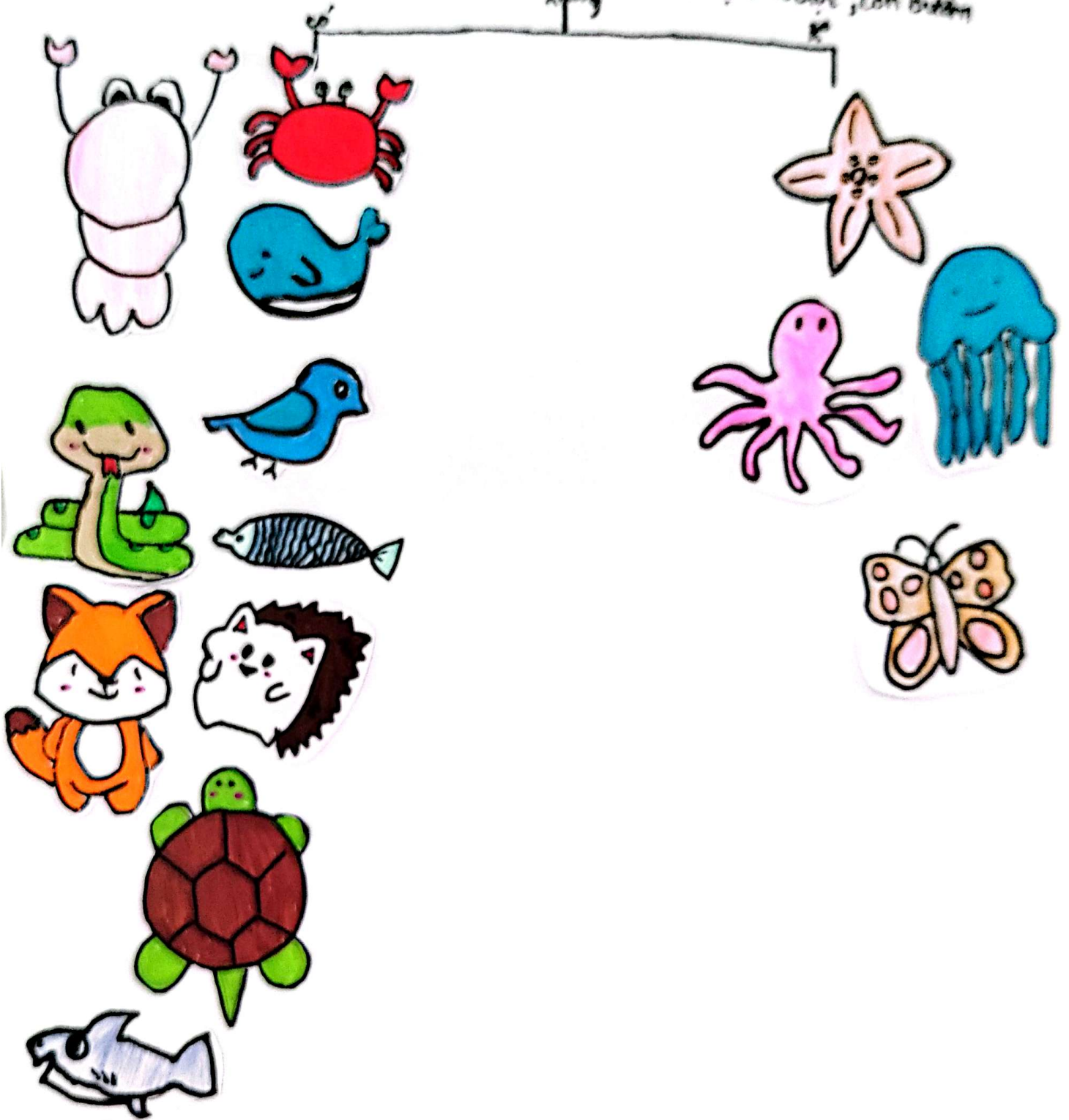


KHÓA LƯỢNG PHÂN

con cua, con chim, con rắn, con tôm,
con cá, con sứa, con rùa, con cáo, sao biển,
cá voi, cá mập, con nhím, bạch tuộc, con bướm

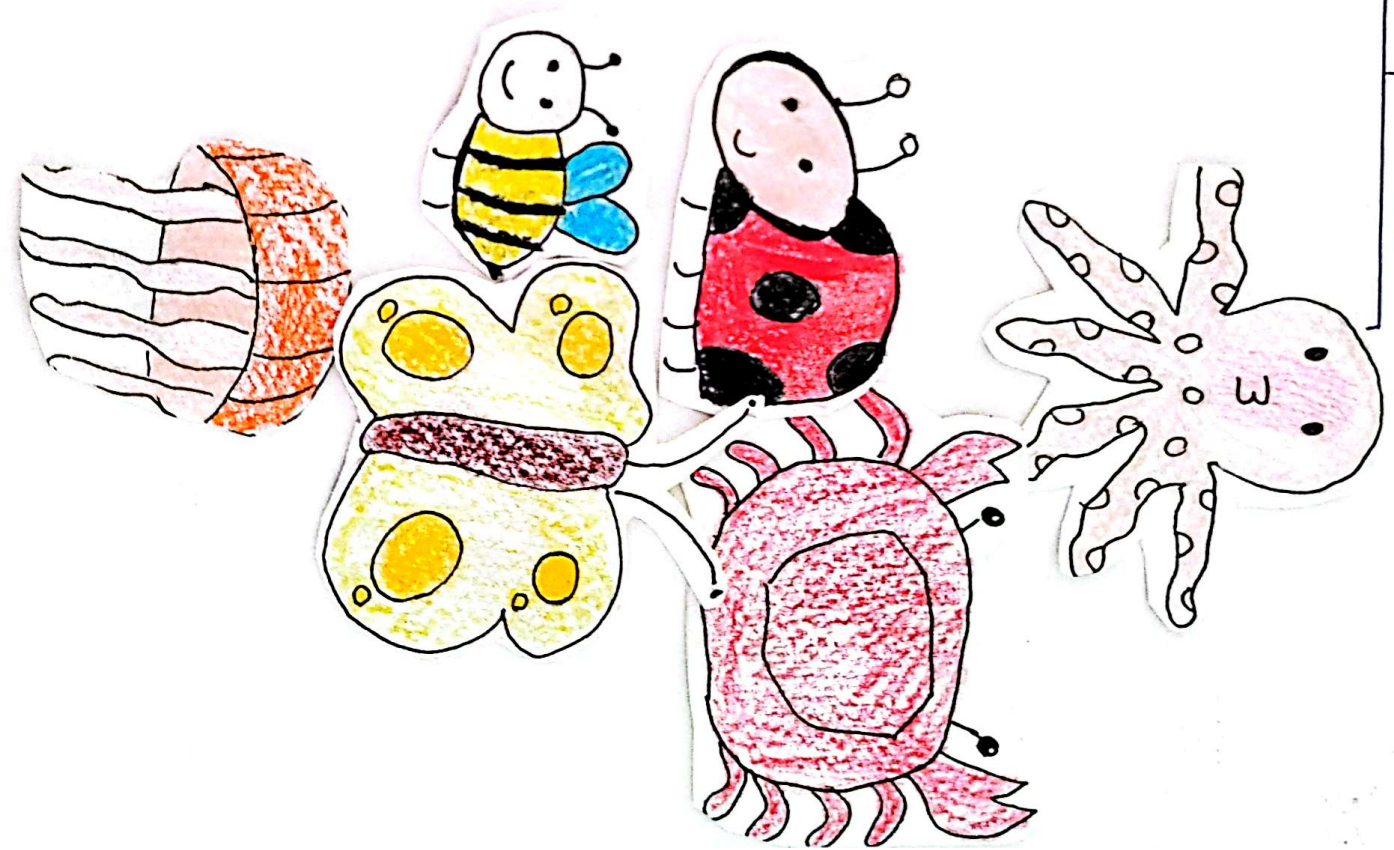


Quạ, bọ rùa, thỏ, con ong, bạch tuộc,
bướm, rùa, sữa, con heo, cá heo, cá, cua.

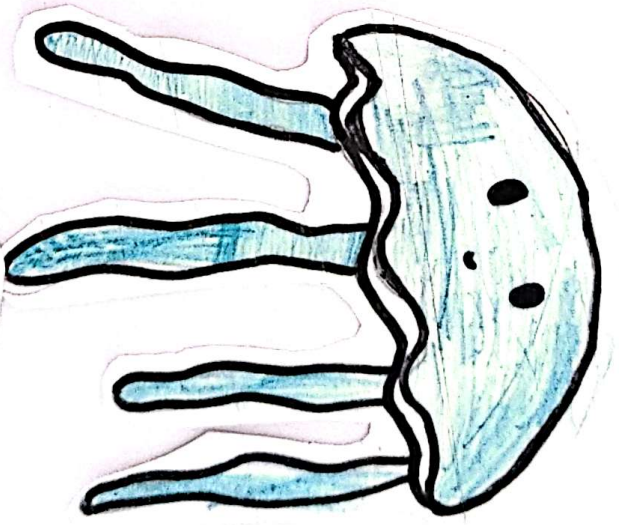
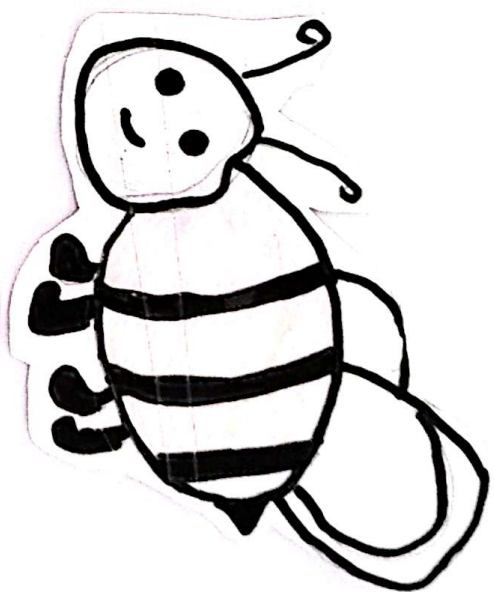
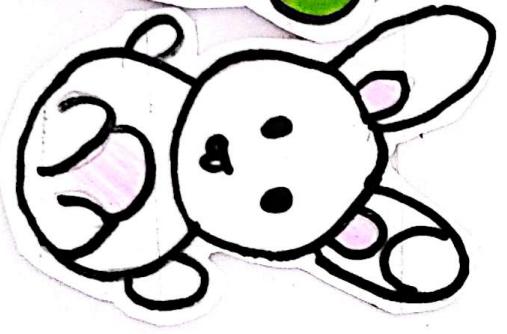
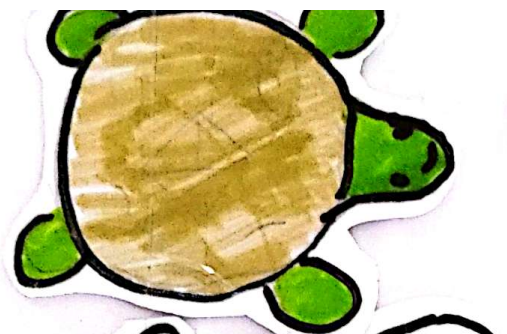
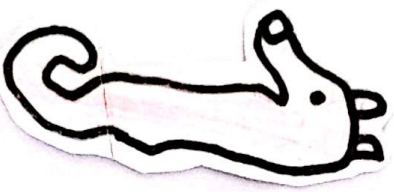
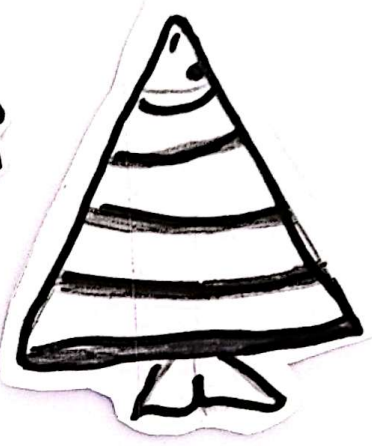
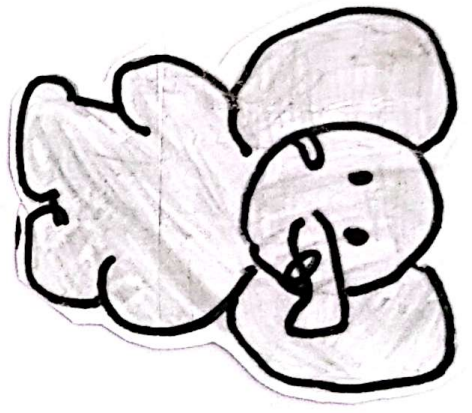
Có xương sống
~~không~~

Không xương sống
~~không~~

Quạ, bọ rùa



Xây dựng Khoa Lịch sử Phần

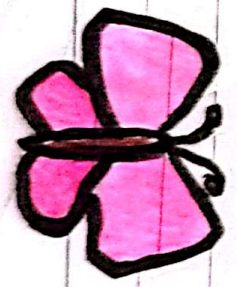
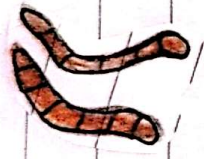
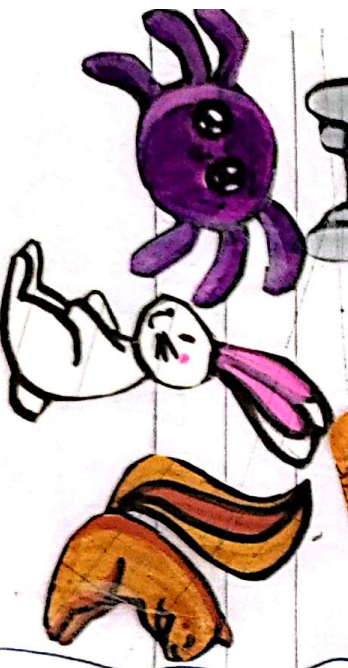
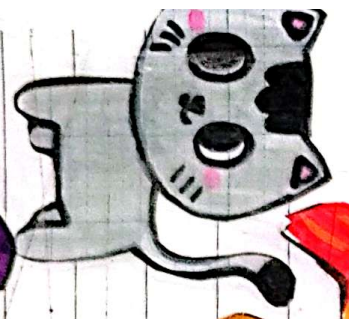
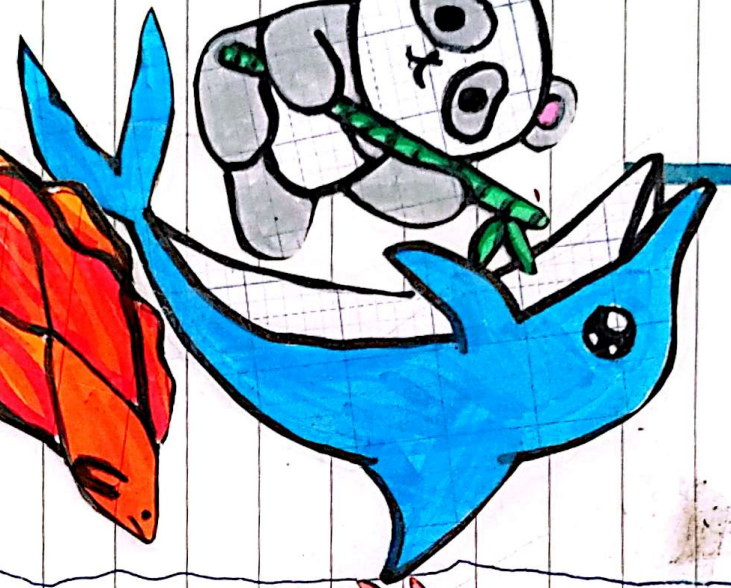
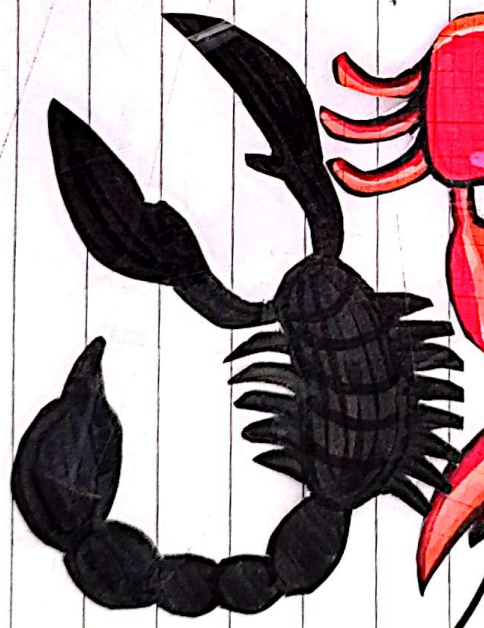
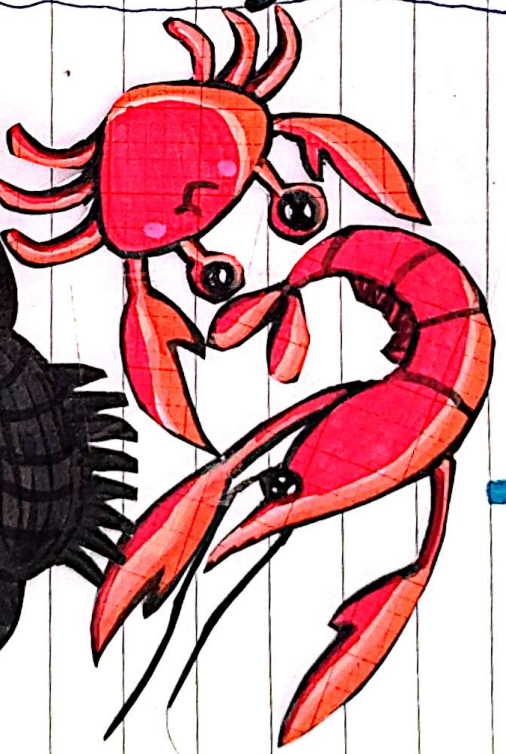
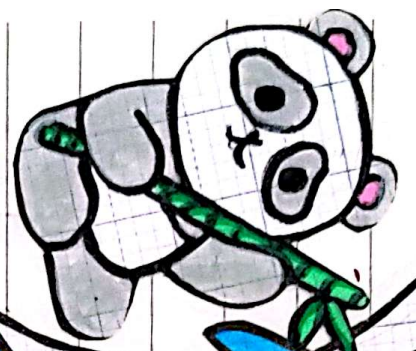


GIỚI ĐỘNG VẬT

Có

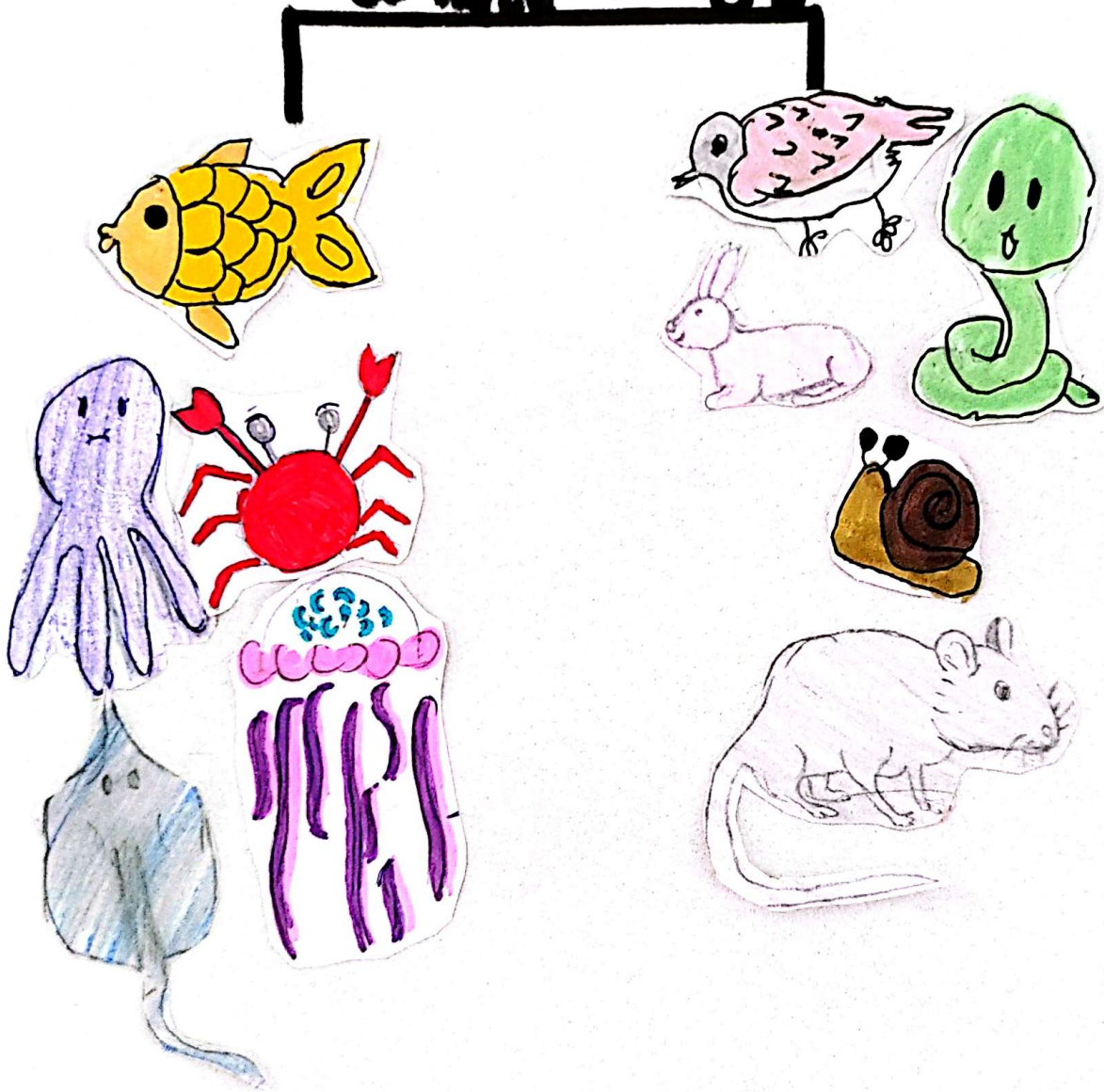
Scubong

Không



(Giới Động) Vật

MTS trường
ở xã Hòa Bình



K. Phong . T. Nhi . Như ý
lớp 6a3

thỏ, bò, tôm, sữa, cá, mực, rùa,
bướm, ong, cua

Có xương sống

Không có xương sống

